

Oxford Burial Meadow

Outline Design Proposals

Oxford City Council plan to create a new green space and low impact burial meadow on Council owned land off Oxford Road towards Horspath. Key stakeholders including the Interfaith Forum have helped shape the design brief. The site is accessible by bus, bike and car, with a new footpath link planned to the existing Council owned carpark. Disabled and cycle parking will be on site, as well as water points and benches. Full visitor information for the new site will be provided on the Council website.

These boards set out the key objectives and outline design proposals.

The Site



Site location and context



Photo of the existing site

Landscape Character



Thaile Park, France



Textured concrete



Self binding gravel



Mown path



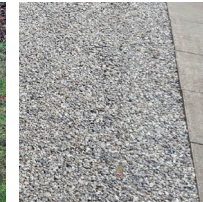
Individual benches



Peter August Bockstiegel Museum, Germany



Timber Headstone



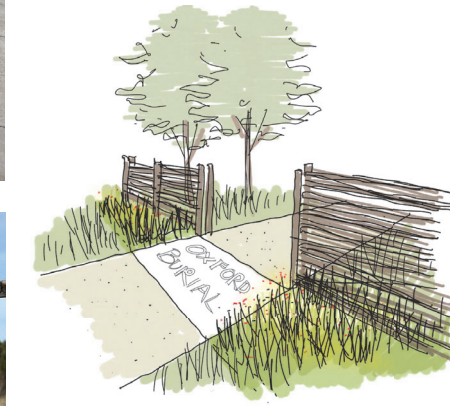
Loose gravel



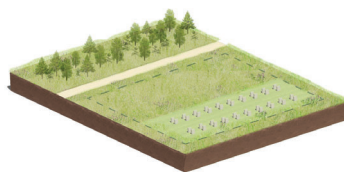
Matt Stone Headstone



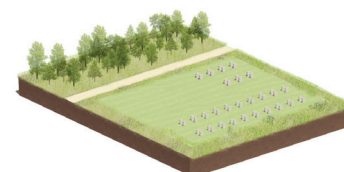
Timber sign posts



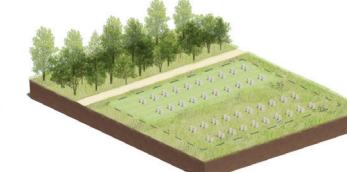
Sketch of entrance points to the burial meadow



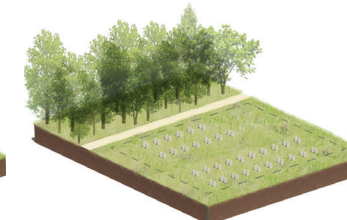
1. Year 1 - 5
Initial headstones with mown lawn
Remaining space managed as a wildflower meadow
New trees planted



2. Year 5-10
Further headstones with mown lawn
Meadow maintained outside of burial areas
Planted trees begin to mature



3. Year 10-15
Area of initial headstones managed to include longer grass and meadow
Mown lawn to active burial space
Planted trees now semi mature



4. Year 20+
Burial space managed to allow wildflower to grow
Planted trees now mature

Management of the burial meadow grasslands over time

Oxford Burial Meadow

We want to hear from you

The Council is now inviting residents to get involved and give their views on the initial outline designs that have been developed for this new community green space before more detailed designs are expected to be submitted for planning approval in the autumn. Next project stages include securing funding and carrying out works on site.

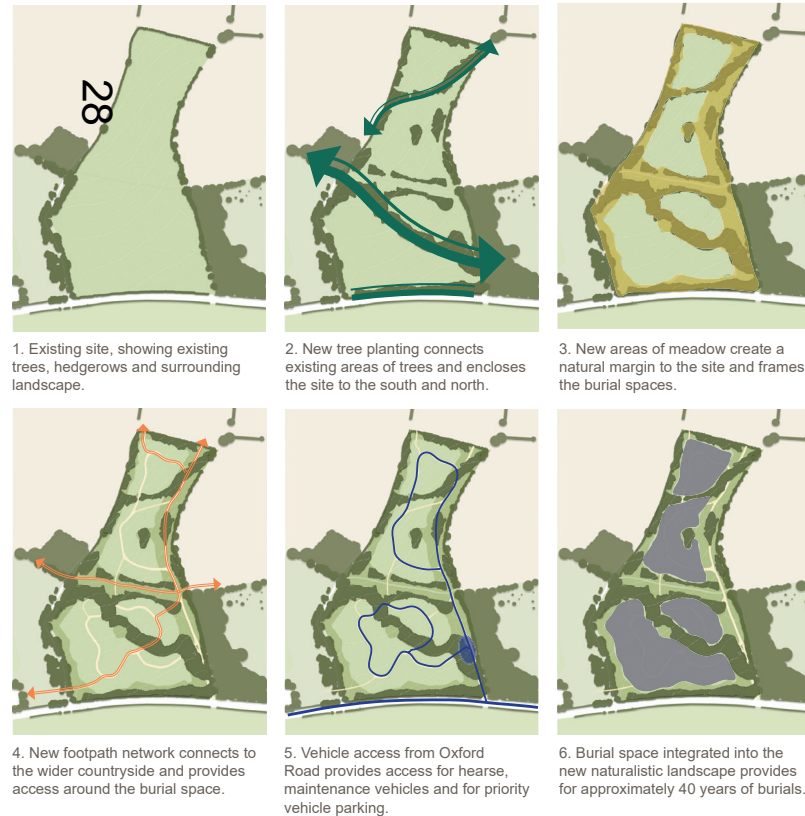
Please visit the Burial Meadow project page of the Council website to have your say and stay up to date with project progress. Oxford.gov.uk/burialmeadow

Key Aims

Create a naturalistic 'country park' style burial meadow which provides;

- Publicly accessible open space with footpath connections to the wider countryside
- Maximum wildlife and ecology benefit
- An important space for families and friends to gather at a time of bereavement and bury family members; as well as regularly return to visit graves and remember loved ones
- New burial space for Oxford for the next 40 to 45 years

Design Proposals



Footpath provides walking loop around open space and burial meadow

Existing Public Right of Way retained in site design

Meadow swales provide natural drainage to site and burial plots. Alignment follows the site contours

Potential gathering/meeting point
Burial spaces, with headstones running along the alignment of the site contours

New footpath link to existing Council car park



New tree planting supplements the existing boundary trees and hedgerow

Entrance feature signifies entering and leaving the burial meadow

PHASE 2
Northern half of site will remain as a wildflower meadow until required

New natural margin to the site including wildflower meadow and trees

New tree planting connects existing areas of trees

Small parking zone for hearse, maintenance vehicles and priority vehicle parking

Access for hearse, maintenance vehicle and for priority vehicle parking